



ON SHINE

# 昂欣 企業有限公司

ON SHINE ENTERPRISE CO.,LTD.

11F-6. NO 880. CHUNG CHENG ROAD

CHUNG HO CITY TAIPEI TAIWAN

TEL:886-2-82281766 FAX:886-2-82281785

<http://www.onshine.com.tw>

RoHS Compliant  
Lead free  
Lead-free soldering

TX MODULE-SMD MINI SIZE 7X5/mm

MODELNO:TXA1-434-S75

REV.NO.:2

## A.GENERAL DESCRIPTION

Radio transmitter module with SAW Resonator and External Antenna.

The TXA1-434-S75 is an hybrid circuit that allows to realize a complete radio transmitter adding a coding circuit

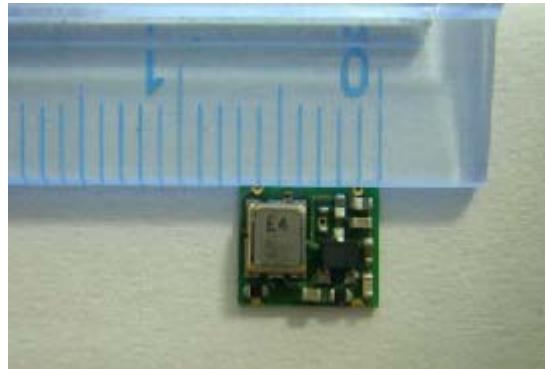
## B.APPLICATION

Home security systems

Car alarm

Remote gate control

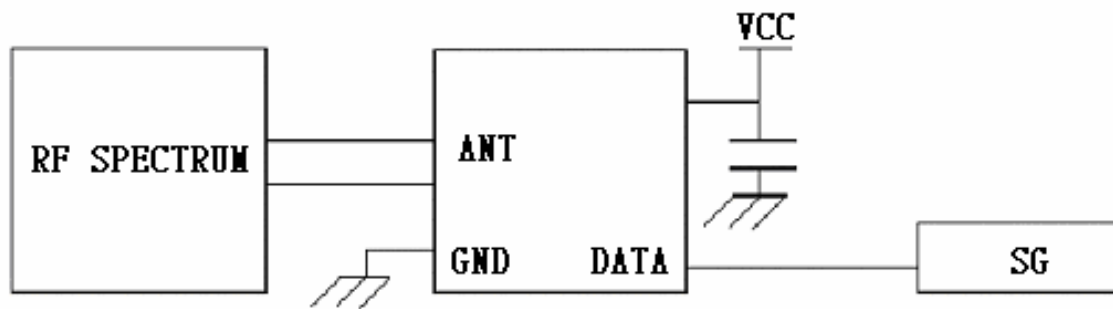
Sensor reporting



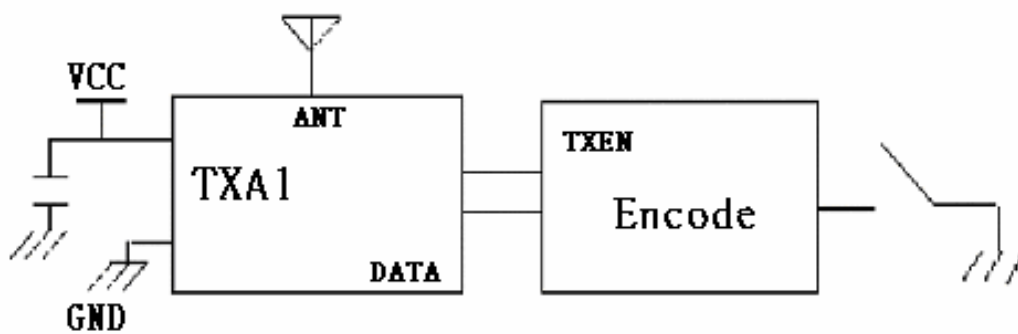
## C.ELECTRICAL CHARACTERISTICS:

Parameter		Condition	Limits			Units
			min.	typ.	max.	
Current Consumption	23+-3d eg.C	Vcc=12 VDC, DATA=3V	-	-	13.5	mA
TX Frequency	23+-3	-	-	433.92	-	MHz
Frequency Tolerance	23+-3d eg.C			+/-75		KHz
Output Power	23+-3d eg.C	Vcc=12 VDC, DATA=3V	7	10	-	dBm
DATA Rate	23+-3d eg.C	-	-	1	3	KHz
MODULATION	23+-3d eg.C	DATA=3 VDC or 0 VDC	-	ASK	-	-

### D.TYPING TEST CIRCUIT



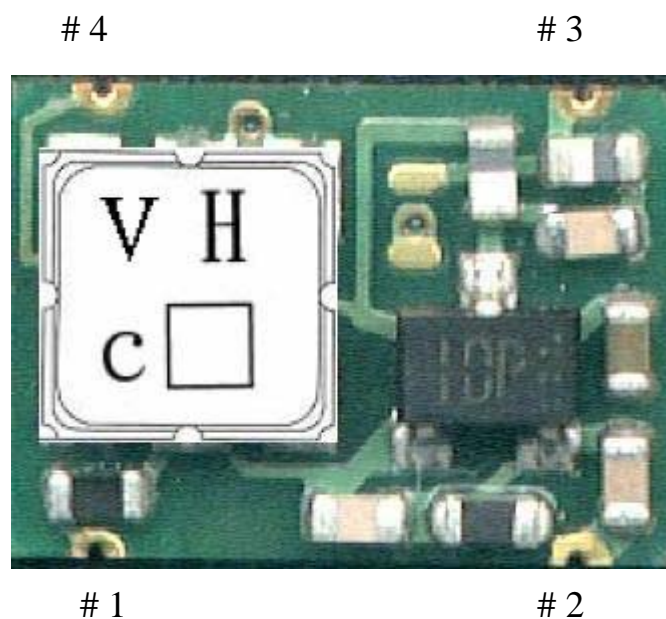
### E.TYPICAL TRANSMITTER APPLICATION



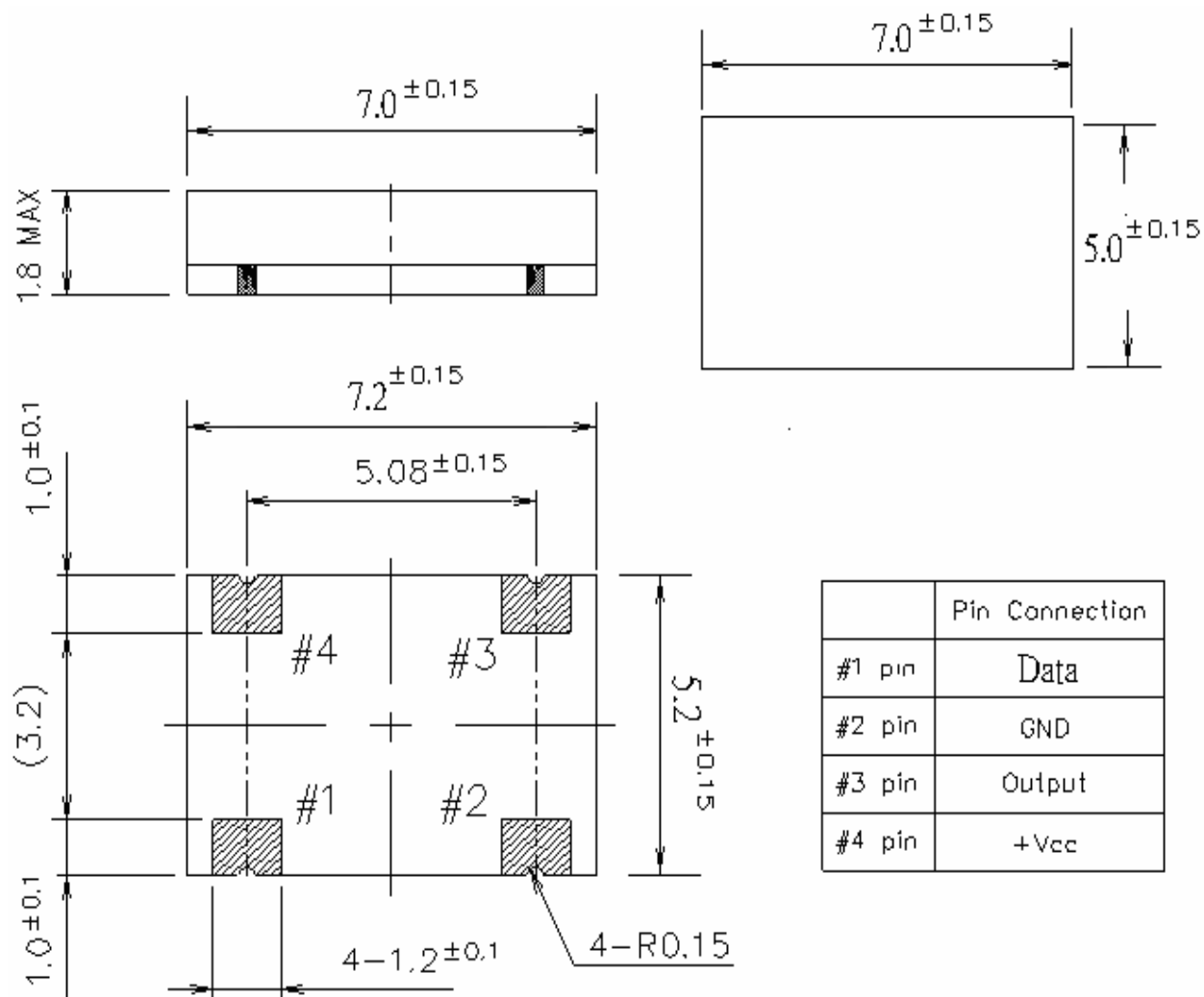
Notes:

- 1.Encoder : HT12D/E , PTC ( 2262 )
- 2.Antenna : Length = 17.2cm for 434MHz

### F.PIN CONFIGURATION



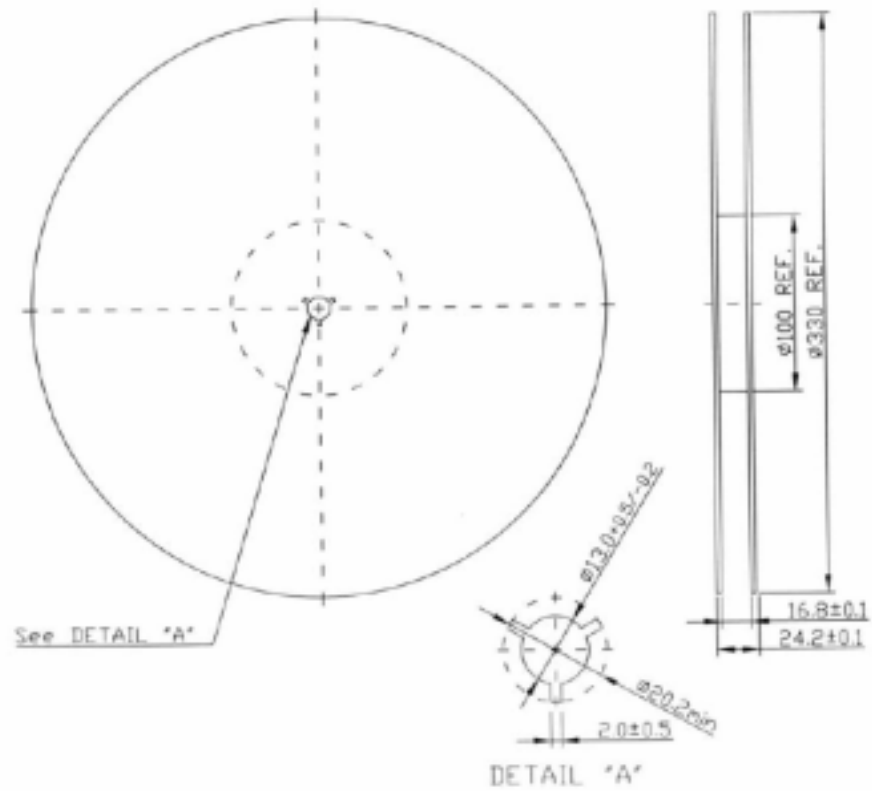
## G.DIMENSION



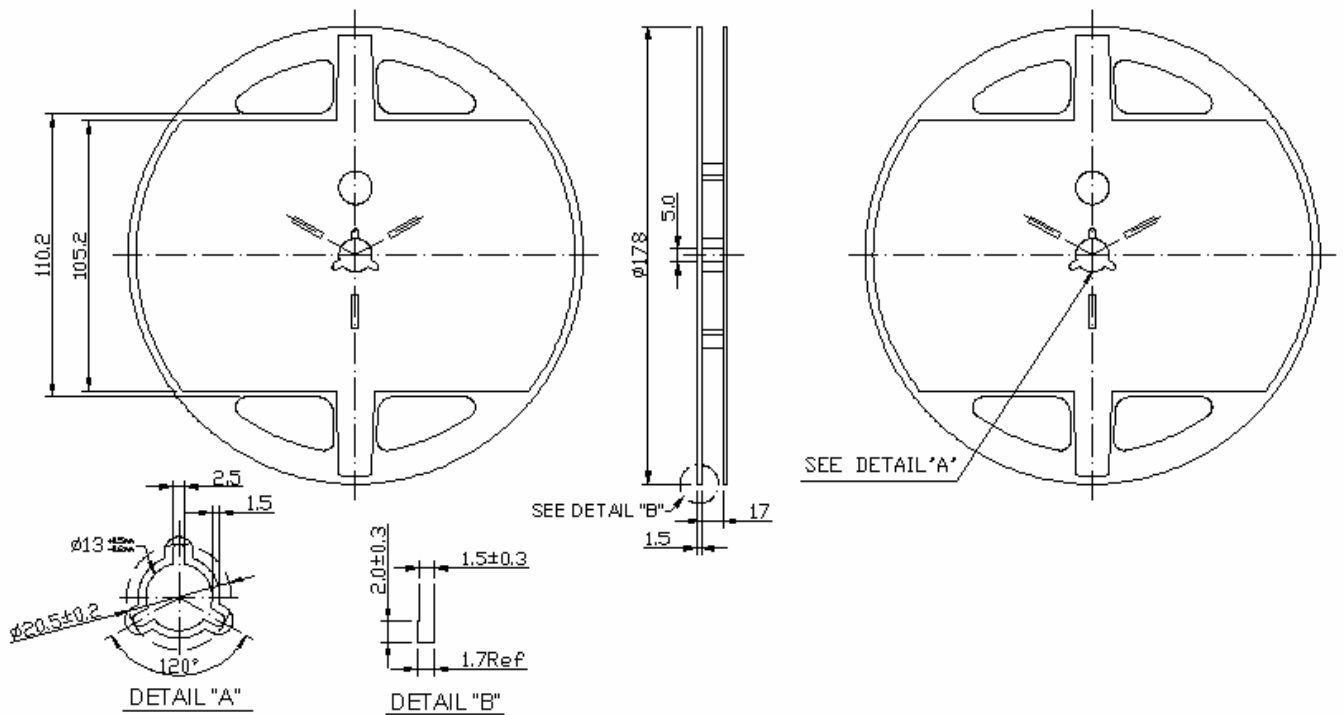
Recommended Soldering Pattern

## H. PART ORIENTATION

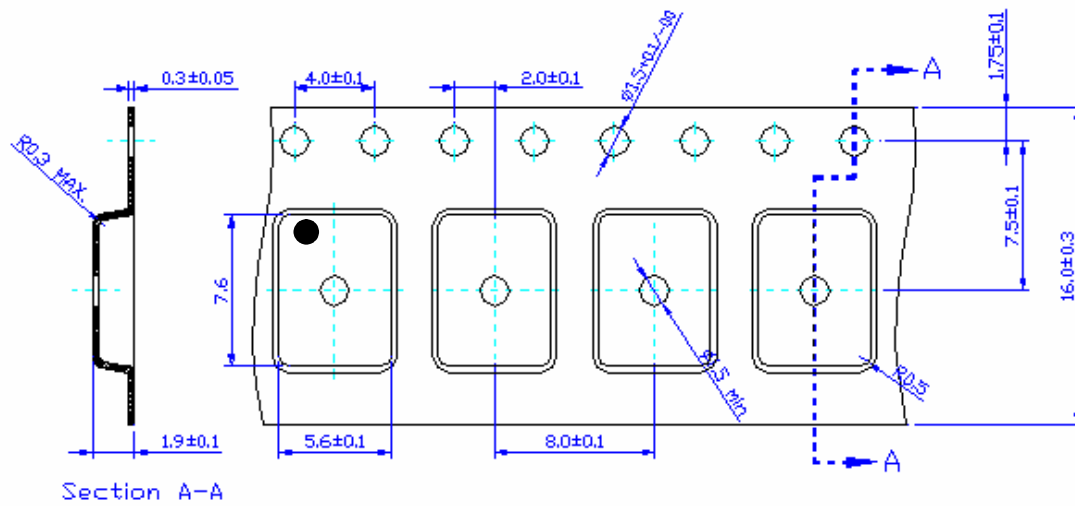
Tape & Reel for 3kpcs:



Tape & Reel for 1kpcs:



ON SHINE ENTERPRISE CO., LTD.



### I. Reflow Profile:

1. Preheating shall be fixed at 140~160 ° C for 60~90 seconds.
2. Ascending time to preheating temperature 150 ° C shall be 30 seconds min.
3. Heating shall be fixed at 200 ° C for 50~60 seconds and at 230+/-10 ° C peak.

